

### MAXI Masonry (260–320 mm)

USE ON MASONRY

#### Classification/system components

**Designation:** Approved permanent scaffold anchor system for ETICS, ventilated curtain wall façade and cavity wall according to DIN 4426 (German standard).  
For use on masonry with a characteristic load-bearing capacity of 5.0 KN of the strength class 28 in the format 3DF.

**Add. feature:** for structure thicknesses from 260–320 mm

**rocketplug:** Plastic frame plug (4 units)

**rocketbase:** Load distribution plate, galvanised steel, 420 x 280 mm

**rocketbody:** Anchor body, plastic (glass-fibre reinforced)

**rocketbolt:** Eye-bolt, special steel,  $\varnothing$  18 mm

**rocketseal:** Plug, plastic body with hex stainless steel insert

**Art. number:** 9.1.220

#### Accessories (available separately)

**rocketglue:** fast-hardening composite glue for initial adhesion of the load distribution plate

**Assembly set:** Available as Standard or Extended (for ETICS panels).  
Necessary special tools for assembly of the **isorocket®** permanent scaffold anchor

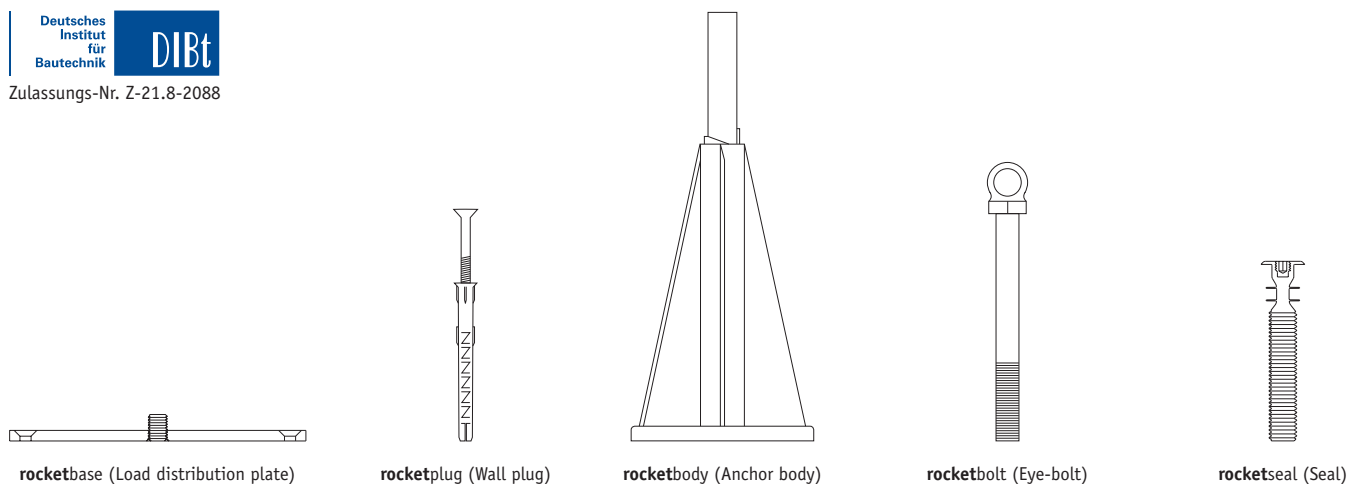


#### Product description:

The **isorocket®** permanent scaffold anchor **MAXI Masonry** is an approved anchor system according to DIN 4426 (German standard) for external thermal insulation composite systems (ETICS), ventilated curtain wall façade (VCW) and cavity wall that protects the façade against damage right from the outset. **isorocket®** remains as a permanent, almost thermal bridge-free anchor point integrated into the façade, which means it can be reused at any time. Thanks to its ideal force dissipation, the **isorocket®** permanent scaffold anchor not only ensures a secure hold of the construction scaffold, it can also be applied for various uses in new buildings and also later. The extensive work required to fix damage to new façades, for instance damage often caused by conventional ring screws, is now a thing of the past. The **isorocket®** permanent scaffold anchor **MAXI Masonry** is suitable for structure thicknesses of 260–320 mm on masonry. The permanent anchor system allows clean separation of the various trades and does not leave any mutual dependencies between the façade and scaffold construction.



Zulassungs-Nr. Z-21.8-2088



rocketbase (Load distribution plate)

rocketplug (Wall plug)

rocketbody (Anchor body)

rocketbolt (Eye-bolt)

rocketseal (Seal)

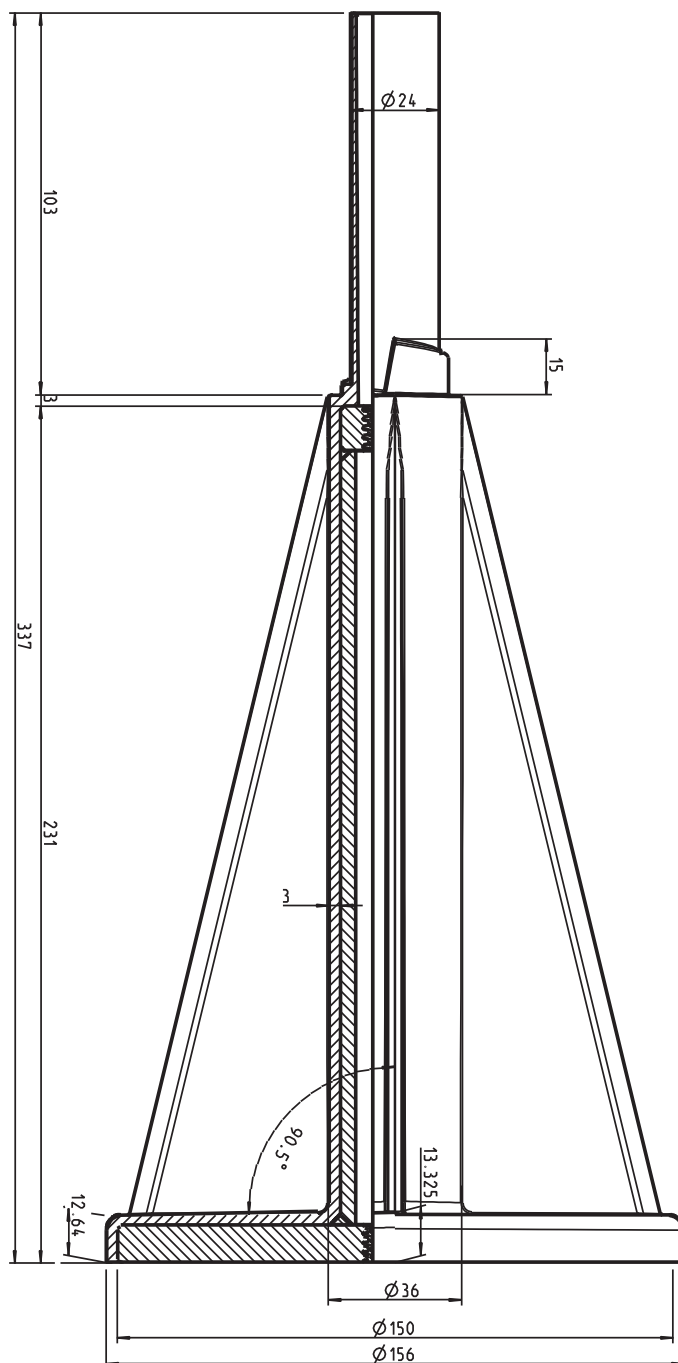
Professional permanent scaffold anchor for ETICS, VCW and Cavity wall. Approved for use on masonry according to DIN 4426 (German standard) with ideal force dissipation. Remains permanently in the façade and can be reused at any time.

## MAXI Masonry (260–320 mm)

USE ON MASONRY

### DIMENSIONS

rocketbody (Anchor body)

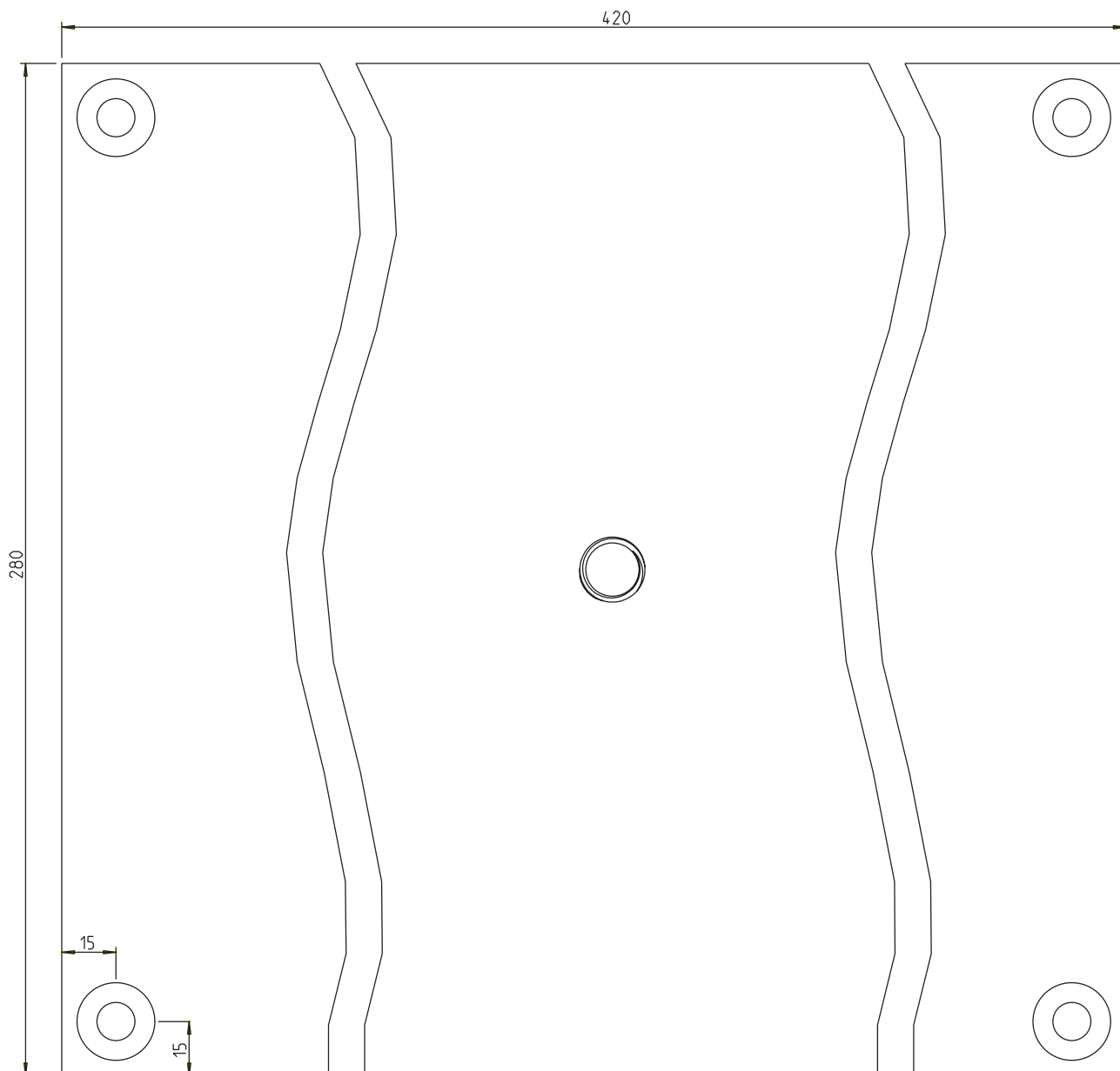


## MAXI Masonry (260–320 mm)

USE ON MASONRY

### DIMENSIONS

rocketbase (Load distribution plate)



# isorocket®

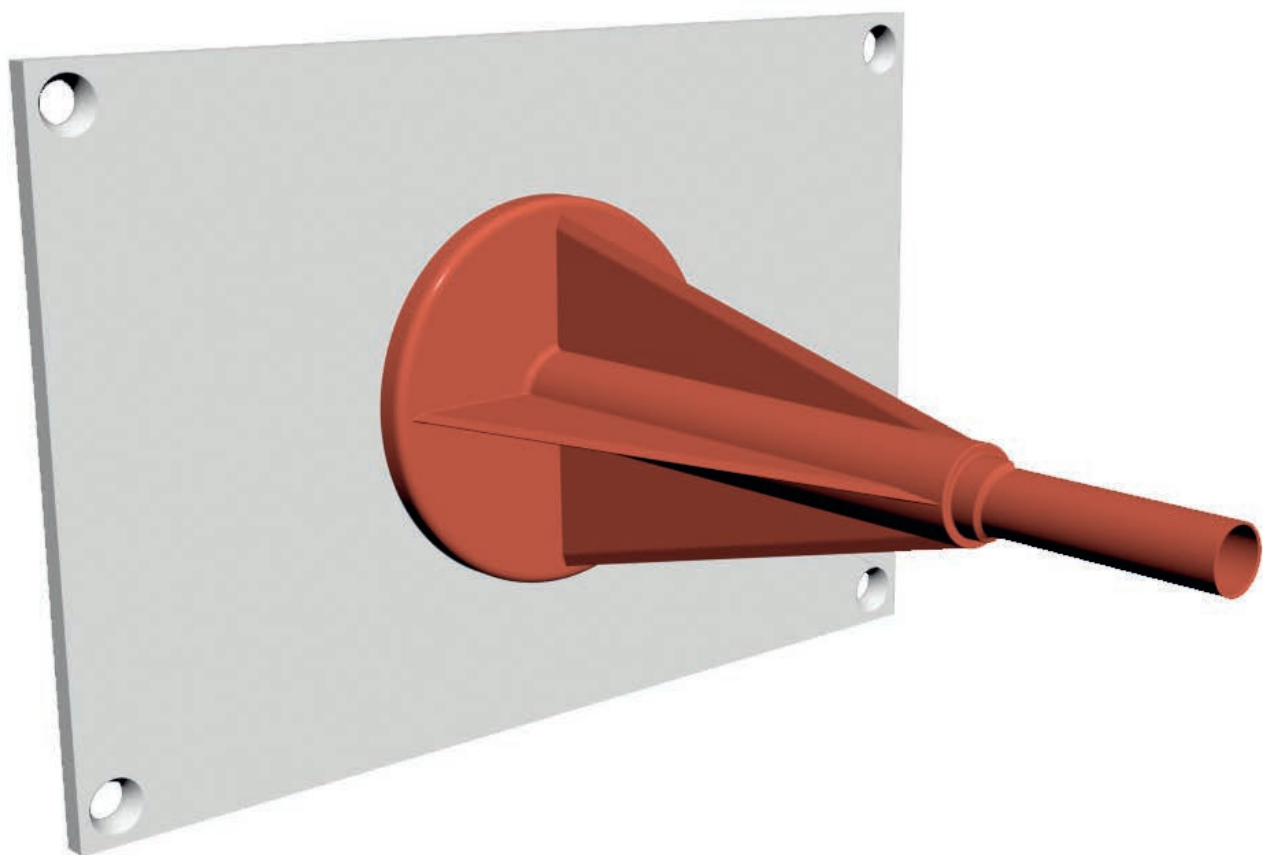
PERMANENT SCAFFOLD  
ANCHOR FOR ETICS/  
VCW/CAVITY WALL

MAXI

MAXI Masonry (260–320 mm)

USE ON MASONRY

CAD SCREEN



The CAD data for this permanent anchor system are available for download at [www.isorocket.de](http://www.isorocket.de)

**isoline**® Safety in  
façades

**WESSENDORF**   
sicher drauf, sicher dran